

The highly versatile, comprehensive, and sensitive approach to organ function through the **MERIDIAN** system.

MERIDIAN - II has the following features

All-in-one type Design

- All-in-one type with built-in computer and keyboard.
- Outstanding design than any other equivalent system worldwide
- Equipped with convenient touch-screen monitor for the health care professional.

Medicament Test



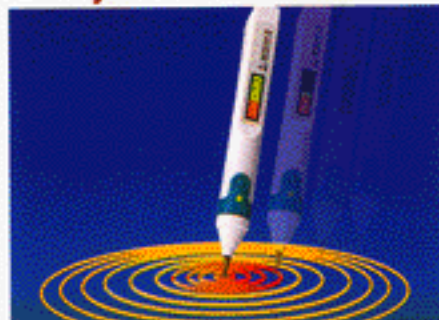
- A doctor can select his favorite medicine appropriate for patient from the vast array of medicament D/B.
- Even a beginner can obtain proper medicine promptly, and more precisely according to patient's symptom from its recommended D/B.
- Doctors can edit and record an applicable medicine to each patient based on related organ and systems.

Automatic Point Treatment



- Automatic synthesis of point treatment signal from point measurement result.
- Intensification of energy penetration for point treatment by Uni-polar Modulation (UPM) technique.
- Automatic switch from diagnosis to treatment and vice versa by pushing button on the probe.
- Hand-free point treatment electric.

Easy Measurement



- Detailed display of measurement points by high-resolution computer graphics.
- Point finder for exact location by Auto Reference Clamp (ARC) with luminous signal indicator, informing the user optically when the center of point is localized.
- Elastic probe tip enabling the beginner to apply an appropriate pressure easily.

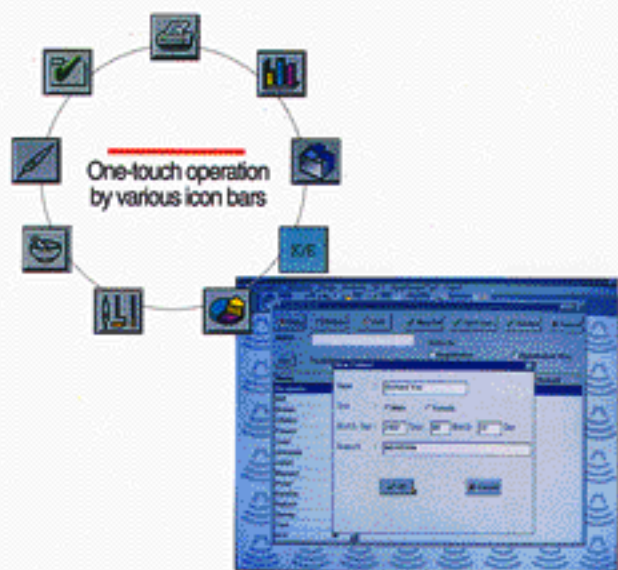
One-touch Operation



- Direct operation by the contact-pointer on measurement probe or fingertip through touch-screen display monitor.
- WINDOWS® graphic user interface (GUI)
 - one-touch operation by various icon bars
 - complete evaluation of results with bar and circular graph.
 - automatic sorting of measurement results in the order of severity of diagnosed diseases by analysis chart.
 - report of measurement and treatment results.



Multi-purpose S/W Programs



Patient data file

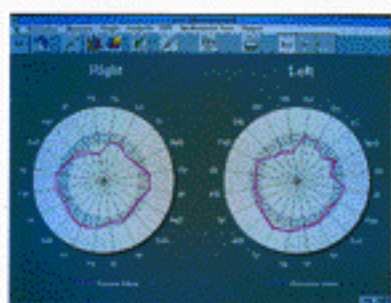


Measurement supporting screen(hand part)



Evaluation graph for analysis(I)

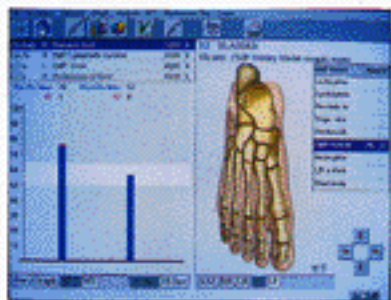
MERIDIAN



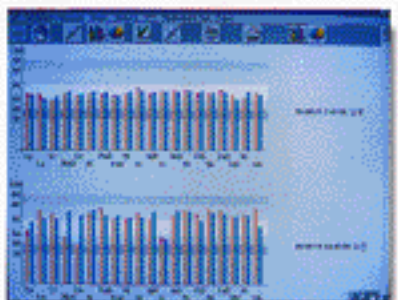
Evaluation graph for analysis (II)



Analysis chart of measurement result



Presentation of treatment result



Comparison chart by review



Automatic Point Finder Function by Probe
Possible to locate the point easily by
ARC(Auto Reference Clamp Point Finder)technique

MERIDIAN

*The ultimate luxury
MERIDIAN- II,
which is tailored to the
requirements of the most
demanding health care
professional*



Hand-free point treatment electrode.

MERIDIAN Main Measurement Points



1. Ly. (Lymph Vessel)
2. Lu. (Lung)
3. LI. (Large Intestine)
4. NeD. (Nerval Degeneration)
5. Cir. (Circulation)
6. Al. (Allergy)
7. PaD. (Parenchymal & epithelial Degeneration ; Organ Degeneration)
8. End. (Endocrine)
9. Ht. (Hear)
10. SI.(Small Intestine)



11. Pa/Sp (Pancreas and Spleen)
12. Li. (Liver)
13. ArD. (Articular Degeneration)
14. St. (Stomach)
15. FiD. (Fibroid Degeneration)
16. Sk. (Skin)
17. FaD. (Fatty Degeneration)
18. Gbl. (Gallbladder and Bile duct)
19. Kl. (Kidney)
20. Ub. (Urinary Bladder)

MERIDIAN is based on and offers the followings

Topological connections between skin and internal organs

Special points on the skin have a topological connection with the internal organs, especially on hands and feet, via a special network of energy information named "Meridian". Biological active points (BAPs) have been used for the treatments of functional disturbance in the ancient medical field of "Acupuncture" which arose from East-Asia and is spreading to the world.

Bi-directional BAPs between diagnosis and therapy

The functional status of internal organs are reflected to the BAPs on the skin by way of quantifiable electric characteristics. A diagnostic as well as therapeutic approach to BAPs, including measurement and treatment method, was prepared based on innovative electronic technology originated by medical doctors in Germany, Dr. Reinhold Voll M.D. and his colleagues. This examination process is a proven method for gaining valuable information on the body's vital functions.

Comprehensive examination as a whole

These measurements indicate the balance or imbalances of the various organs and systems. The body as a whole or as a part is examined with reference to the complicated interrelationship of organ and system. A comprehensive examination can be achieved within a 30 minute the period by proficient technician or health care professional.

Highly sensitive functional diagnosis

Most of chronic pathological process that leads to presentation of morphological change is preceded by an earlier stage of functional disturbance that is taken into account by meridian. This furnishes exacting opportunities for earlier intervention by the health care professional.

A new step to preventive medicine

The opportunity to detect a health problem from the pre-clinical stage can be treated easily by appropriate therapy. Prior to an external manifestation of symptoms, the first phase of organ and system deterioration is the internal weakening of an ability to defend and regulate itself. MERIDIAN detects even this minor functional change, and make a new step toward preventive medicine.

Immediate monitoring of therapeutic effectiveness

The progress of corrective therapies may be monitored. With its highly sensitive measurement system MERIDIAN provides, in a non-invasive procedure, a direct opportunity for the health care professional to make a quantifiable and objective analysis of therapeutic effectiveness is furnished to the patient.

Non-invasive corrective therapy

Assistance to the health care professional in the corrective therapy of functional disturbance. MERIDIAN automatically prepares the most suitable wave-forms and frequencies oriented to each organ and system which are proved to have higher therapeutic effectiveness according to the measurement result. This treatment method is non-invasive, safe and very comfortable.



Tips on MERIDIAN ...

- These are applications of meridian theory both diagnostic and therapeutic and its related concepts as both bio-informational and bio-energetic medicine.
- It is precisely for this reason that diagnostic and therapeutic procedures based on meridian theory are successful at approaching the body holistically.
- It is the most sophisticated modern functional diagnostic system, which is safer and more comprehensive, versatile, and relatively cost effective.
- The only way to address acupuncture successfully and scientifically is through the meridian system.
- It is contributing substantially to the improvement of functional diagnostic field, thereby opening a new horizon to preventive medicine.
- As the modern variant of the traditional medicine, it offers you not only functional diagnosis but therapy through the advanced electroacupuncture.
- It is a new concept of functional diagnostic method, enabling you to avoid patient's complaining about pains whose cause mostly you are unable to discover.
- With its solid theoretical foundation in traditional oriental medicine and modern physics, it is perhaps the most "modern" medical methodology available today.